

# Information for parents and carers

## Swim Moulds

Paediatric Audiology

A decorative graphic at the bottom of the page consisting of three overlapping, wavy bands of blue. The top band is a light blue, the middle is a medium blue, and the bottom is a dark blue.

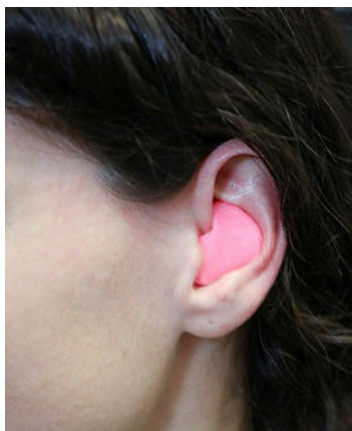
## What is a swim mould?

A swim mould is custom-made exactly to the shape of your ear, it helps to prevent water entering your ear canal whilst swimming or washing your hair.

The swim mould needs to make a tight seal with the ear. It is therefore necessary to take an impression of the ear, so that a custom-made mould can be developed. The impression of the ear is sent to the specialist manufacturer and the swim mould is made from a silicone type of material. **Please allow 3-5 weeks for processing.**

Swim moulds come in various colours. The standard colours are red, blue, yellow, brown, white and clear, with other colours available on request.

It may be necessary to coat the swim mould with Vaseline to improve its water tightness, because even a close-fitting earpiece may allow some water into the ear. It would be advisable to wear a swim cap over the swim mould. It is not advisable to use swim moulds to go under the water or when diving.



## How do you order a swim mould?

### Ensure your ear/ears are free from wax.

1. Contact the Paediatric Audiology department for an appointment for an impression to be taken on **01772 401310**. The impression will be stored at the Paediatric Audiology department until we have received a receipt number of payment.
2. Choose which type of swim mould you would like and how many. If there is a medical need (e.g. perforated ear drum) approved by a clinician, then the price will be slightly subsidised.
3. To make payment, call General Office on **01772 522528** to pay by telephone or complete the attached order form and take it to the General Office (situated at the Main Entrance). They will accept payment and give you a receipt number.
4. Once you have received a receipt, contact the Paediatric Audiology department with proof of payment. This will need to be done within two working days to prevent any shrinkage of the impression. The swim moulds will be processed and sent to the mould manufacturer. You **must** produce a receipt number, or the moulds will not be processed.
5. The moulds can be posted to you directly, an additional postage charge will apply which must be paid alongside the original mould payment. We can contact you to collect the moulds from the department if you would rather collect in person.

## Alternatives

If you have not already tried, ask your pharmacist, they may have suitable earplugs which are somewhat cheaper than custom made swim moulds.

# Order Form

Name: \_\_\_\_\_

Date of Birth: \_\_\_\_\_

Daytime Telephone No: \_\_\_\_\_

Email: \_\_\_\_\_

Address: \_\_\_\_\_

## Price List

- Per ear - standard swim mould – medical £15
- Per ear - standard swim mould – non-medical £30
- If you require floating swim moulds there will be an additional £10 charge per mould
- Postage Charge £2 (if applicable)

Type of ear mould	Price per ear mould	Quantity required	Total price
Standard swim mould - medical	£15		
Standard swim mould – non medical	£30		
Floating	£10 additional cost		
Postage	£2		
Total Cost			

Finance Code **T35171 413670**

## Contact details

Should you require further advice or information please contact Paediatric Audiology on **01772 401310/2** or email [paediatric.audiology@lthtr.nhs.uk](mailto:paediatric.audiology@lthtr.nhs.uk)

## Sources of further information

[www.lancsteachinghospitals.nhs.uk](http://www.lancsteachinghospitals.nhs.uk)

[www.nhs.uk](http://www.nhs.uk)

[www.accessable.co.uk](http://www.accessable.co.uk)

[www.patient.co.uk](http://www.patient.co.uk)

**Follow us on social media @lancshospitals**

**Lancashire Teaching Hospitals NHS Foundation Trust is not responsible for the content of external internet sites.**

All our patient information leaflets are available on our website for patients to access and download:

[www.lancsteachinghospitals.nhs.uk/patient-information-leaflets](http://www.lancsteachinghospitals.nhs.uk/patient-information-leaflets)

Lancashire Teaching Hospitals is a smoke-free site. Smoking is not permitted anywhere on any of our premises, either inside or outside the buildings. Our staff will ask you about your smoking status when you come to hospital and will offer you support and advice about stopping smoking this will include Nicotine Replacement Therapy to help manage your symptoms of withdrawal and the opportunity to speak to a nurse or advisor from the specialist Tobacco and Alcohol Care Team.

If you want to stop smoking, you can also contact Smokefree Lancashire on Freephone **08081962638**.

**Please ask a member of staff if you would like help in understanding this information.**

**This information can be made available in large print, audio, Braille and in other languages.**

**Department:** Paediatric Audiology

**Division:** Women & Childrens

**Production date:** August 2024

**Review date:** August 2027

**JR 1171 v1**