

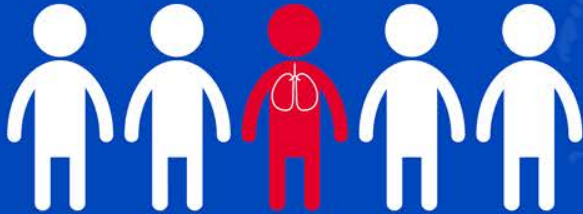
Chronic Obstructive Pulmonary Disease (COPD)

Putting Patients at the centre of care

Dr. Paul A. Marsden
Consultant Respiratory Physician



Lung disease in the UK



Lung disease is responsible for
1 in 5 deaths in the UK



550,000

New diagnoses made each year

Over half a million new diagnoses of respiratory disease are made each year – around 1 every minute

**Every 5 minutes
someone dies of
a lung disease**



12

million people
**RESPIRATORY
DISEASE**

7

million people
**CARDIOVASCULAR
DISEASE**

2.5

million people
CANCER

**British
Lung
Foundation**

**Over 12 million people in the UK have
been diagnosed with lung disease**

Compared with around 7 million people with cardiovascular disease and 2.5 million with cancer

11%

**Total deaths for children
under 15 years**



Lung disease accounts for 11% of the total deaths for children under 15 years (262 children die from lung disease – 5 children a week)

700,000

hospital admissions are made each year

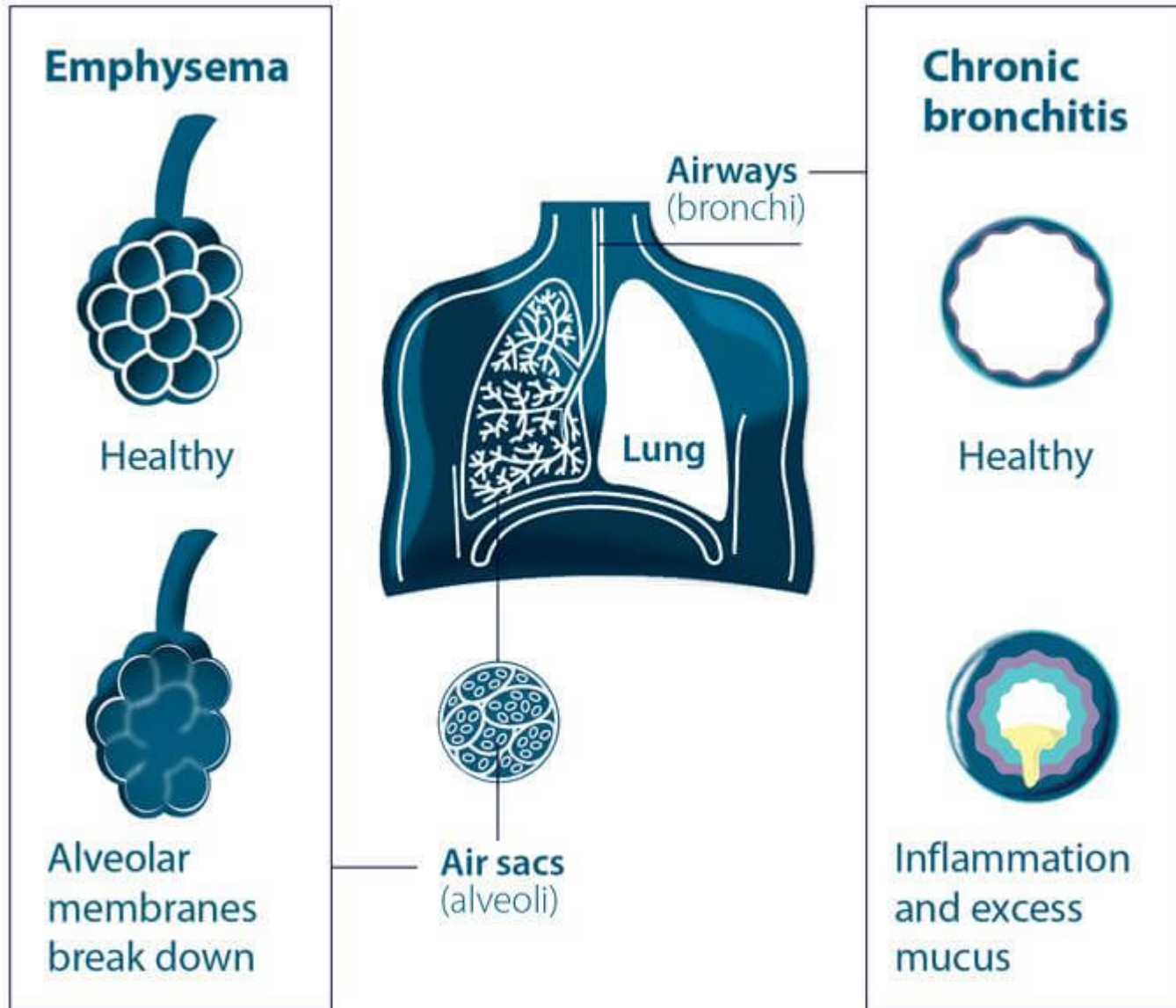
Lung disease accounts for over 6 million bed-days and 8% of total hospital admissions



What is COPD?

- Progressive illness of the lungs
 - Breathlessness
 - Cough and phlegm
 - Tight chest/wheezing
- Flare-ups ‘exacerbations’
 - Worsening of symptoms
 - Sometimes lead to hospital admissions





Around three million people in the UK have COPD, **but over two million are undiagnosed**

Diagnosed:
1 million people



Undiagnosed:
2 million people



www.blf.org.uk/World-COPD-Day

COPD kills around 30,000 people a year in the UK.

If it were a cancer, it would be the second biggest cancer killer in the country.

Lung cancer
☠️ 35,000

☠️
COPD
30,000

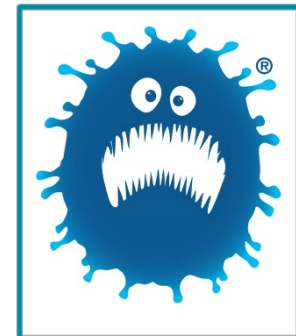
Bowel cancer
☠️ 16,000

British Lung Foundation

www.blf.org.uk/World-COPD-Day



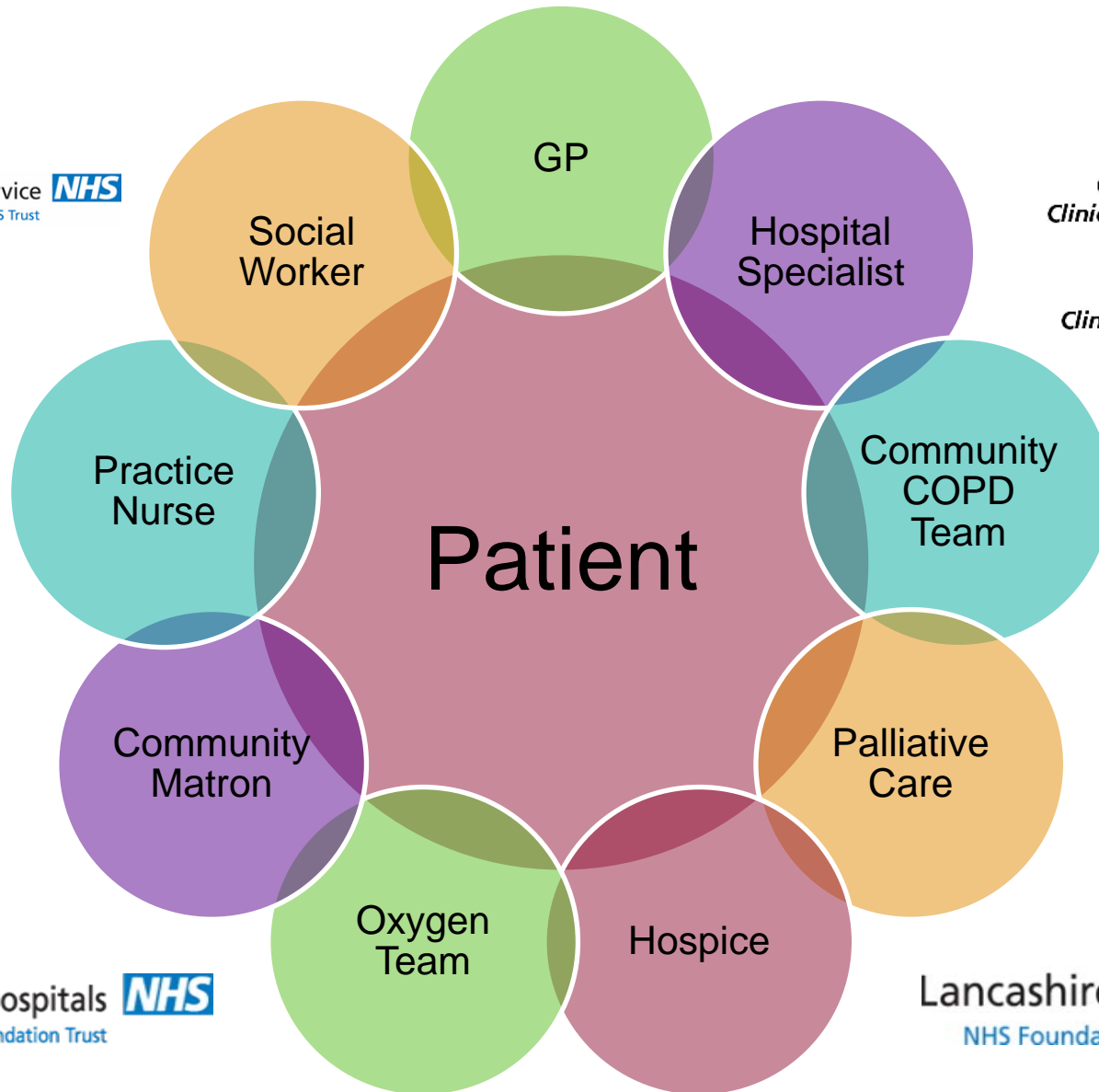
Treatment



North West Ambulance Service **NHS**
NHS Trust

NHS
Chorley and South Ribble
Clinical Commissioning Group

NHS
Greater Preston
Clinical Commissioning Group

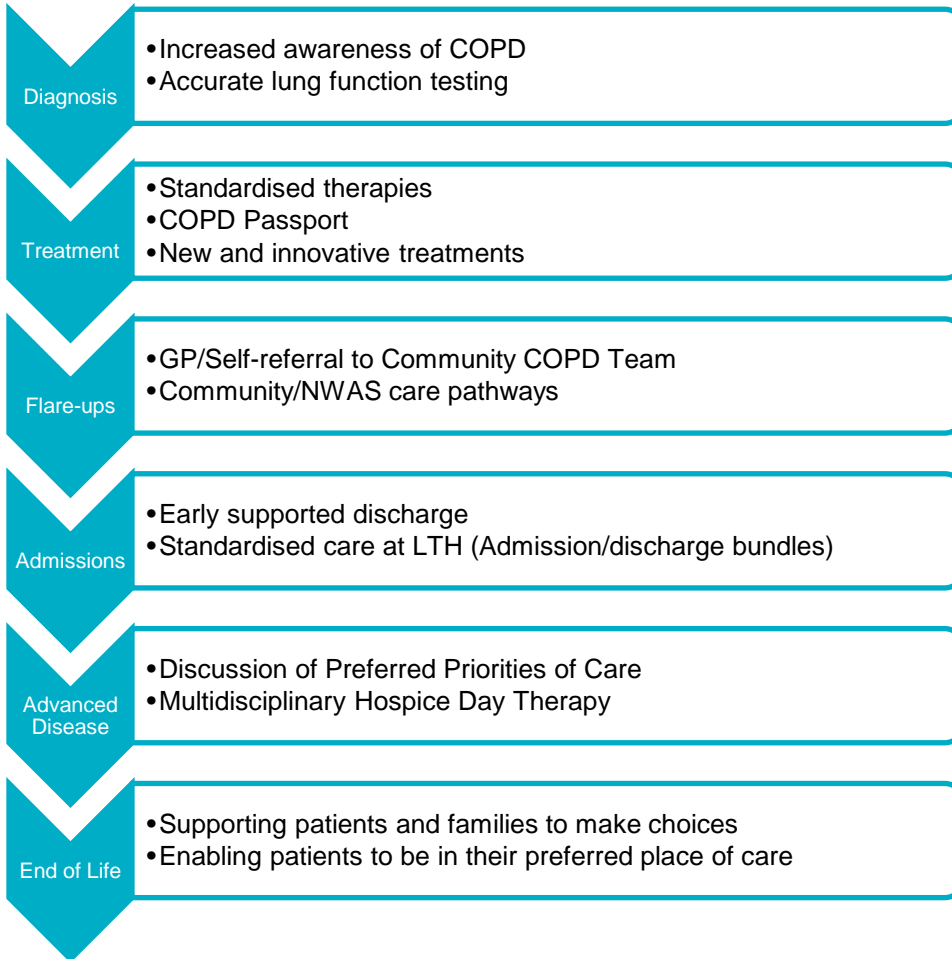


Lancashire Teaching Hospitals **NHS**
NHS Foundation Trust

Lancashire Care **NHS**
NHS Foundation Trust

Patient feedback

- ‘Doctors don’t want to discuss with us the difficult conversations about how long we have left’
- ‘There is a lack of information – it is not clear what is best. We have been informed we need to undertake Pulmonary Rehab training prior to participating in exercise classes, however when a request this training the GP informed me I didn’t need to undertake it’
- ‘If you are on your own it can sometimes feel you have nobody and end up asking yourself “how can I do this?’
- ‘Felt helpless – I have been seen by many different doctors, who have different opinions and I still don’t know what is wrong with me’
- ‘When speaking with a doctor I want someone to listen, I want someone to explain what is going on and why’
- ‘I would like to be able to self-care for myself’

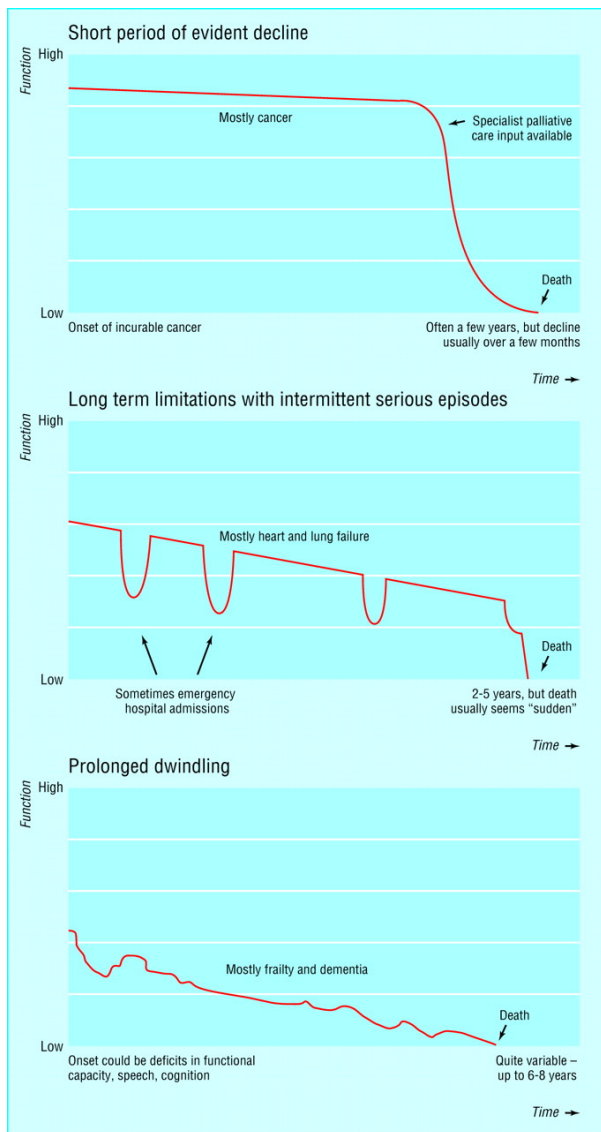


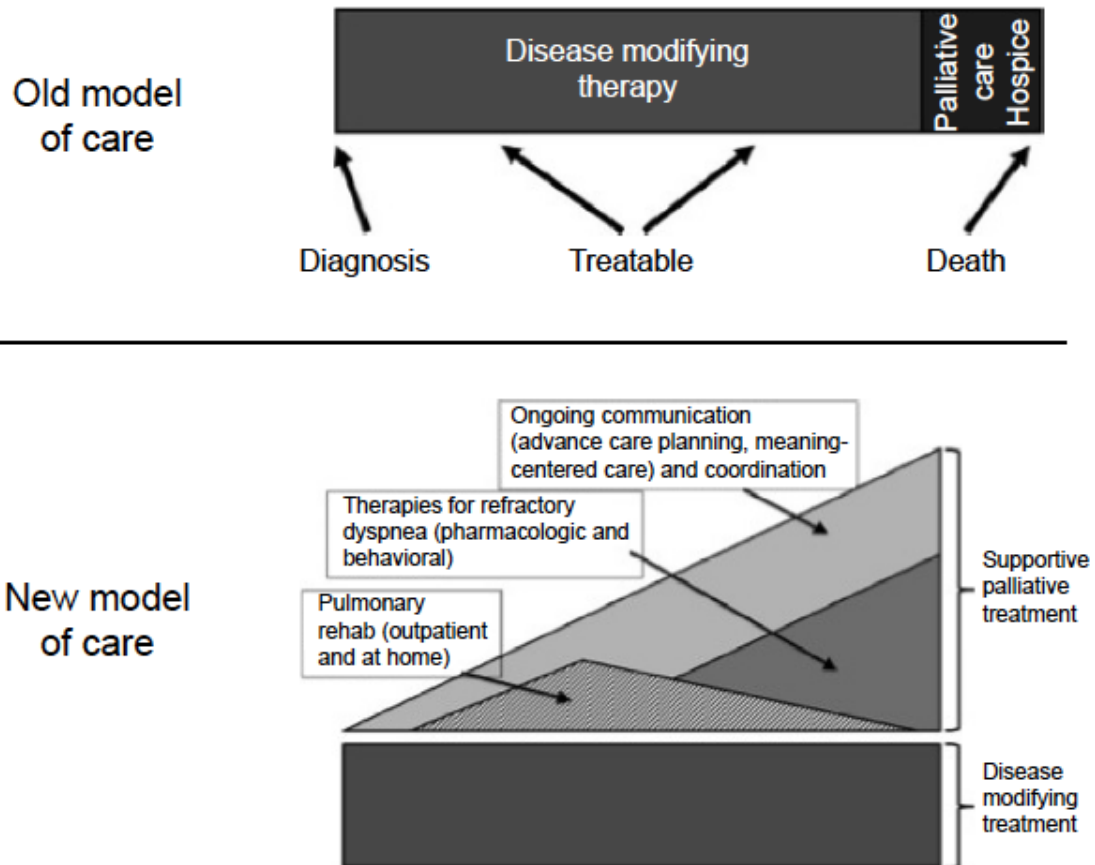
Team working

Partnership

Education

Communication





Advanced Disease

- Multidisciplinary Respiratory Ward Meetings
 - Identify patients at risk of deterioration
 - Highlight to primary care teams
 - Support patients by involving community, social and palliative care teams
 - Allow more patients to make choices about end of life care

Respiratory Day Therapy Programme

- Collaboration of LTH and St. Catherine's Hospice
 - 10 week programme for patients with advanced lung disease
 - Peer support
 - Advanced care planning
 - Complimentary therapies
 - Education ('Know your lungs', nutrition, anxiety, fatigue, breathlessness)
 - Monthly multidisciplinary meeting

Respiratory Day Therapy Programme

– Patient feedback

- ‘It is good for my husband to hear other patients have similar experiences to me I am sure he thinks it is just me’
- ‘When I previously attended a Day therapy programme I felt guilty as I didn’t have cancer I thought I was taken someone else’s place. For this reason it was helpful to be with others with the same condition’
- ‘The education sessions have allowed time talking with each other and sharing ideas this is different than the pulmonary rehab sessions I have attended before’
- ‘Teaching sessions were interactive not just being given information’

Summary

- COPD is a very important condition which is currently underdiagnosed
- We are working with our partners across Central Lancs and beyond to improve care offered to those with this condition

