



Lancashire Teaching
Hospitals
NHS Foundation Trust



Welcome to Histopathology

Careers are made here



Histopathology



Welcome to Lancashire Teaching Hospitals

Thank you for your interest in joining Lancashire Teaching Hospitals NHS Foundation Trust.

We aim to provide outstanding healthcare for our local communities, together with the highest standard of specialised services for patients in Lancashire and South Cumbria.

As one of the top hospital research centres in the UK, we lead clinical trials and studies that will improve the health and life expectancy of this and future generations. We promote and value innovation, and embrace new ways of working, emerging technologies, and pioneering practice. As a learning organisation, we are establishing a continuous improvement ethos, where everyone is encouraged and supported to identify and implement better ways of working that enhance quality of care for our patients, increase productivity and generate efficiencies.

Our world-class teaching facilities and award-winning **education teams** are growing the healthcare workforce of the future, and supporting every member of our team to develop and flourish.

When you join us you will have a tailored personal development plan, and access to our award-winning **leadership programmes**. You will have expert support to lead **research** studies and clinical trials, and opportunities to teach students and colleagues.

Your **health and wellbeing** is of paramount importance, so we will offer you a wide range of staff benefits, and we are building a culture that values everyone's contribution, recognises achievements, and celebrates success.

In our organisation clinicians have a powerful voice, and your views will shape how we work and develop and provide services. When you join us you will be working with a diverse and inspirational team of incredible **award-winning** people, who are motivated to provide excellent care with compassion, and who are supported to reach their potential.

It's a great place to work, and we look forward to welcoming you to our team.

Karen Partington, Chief Executive

Our IT strategy is clinically-led, and we are harnessing technology to create a paperless and more effective working environment.

Our people drive our success; providing excellent care with compassion every day, committed to improving health and life expectancy through continuous improvement, research and innovation.



Welcome to team histopathology

I'm David Orr, Clinical Director of Pathology at Lancashire Teaching Hospitals. Thank you for your interest in joining us.

Our Pathology Department has excellence at its core in service provision across the range of sub specialisms – cellular pathology, microbiology and molecular biology, immunology, clinical biochemistry, haematology and blood transfusion.

With more than 300 staff, and led by a high performing team of specialist consultants, clinical scientists, and managers, our philosophy is to achieve excellence through innovation, in all of our services which include cellular pathology, microbiology and molecular biology, immunology, clinical biochemistry, haematology and blood transfusion.

We host the regional and reference laboratories for immunology and virology, providing a wide range of UKAS accredited tests. We also have a large cellular pathology department serving the regional cancer centre which is based at Royal Preston Hospital.

We have always been early adopters of new technology including molecular technology, and we are a local delivery partner for the 100,000 genome project in Lancashire and South Cumbria. We have also invested in electron microscopy to support our regional renal service, and have plans to expand further.

This is an exciting time for pathology services, and we have been developing a regional collaborative that will optimise opportunities for growth, innovation and research.

If you are interested in joining a world-class team, with world-class ambitions for histopathology please get in touch, we look forward to hearing from you.

David Orr
Clinical Director

We are participating in the 100k genome project



Pathology team members

More about Lancashire Teaching Hospitals

Our mission is to provide excellent care with compassion.

We deliver care and treatment from three main facilities:

- Chorley and South Ribble Hospital
- Royal Preston Hospital
- Specialist Mobility and Rehabilitation Centre, Preston

We aim to provide outstanding hospital care for patients in Preston, Chorley and South Ribble, and offer a range of specialised services to 1.5m people throughout Lancashire and South Cumbria, including :

- Cancer
- Major trauma
- Neurosciences
- Renal
- Specialist Mobility and Rehabilitation
- Vascular

The diversity and breadth of our speciality services enables productive multi-disciplinary working, the provision of patient-centred joined-up care, learning and research opportunities.

We are committed to driving innovation through world-class education, training and research, and our continuous improvement approach challenges us to work more effectively and always strive for a better patient experience and outcome.

£480m annual expenditure

7700 staff

Our values

We believe services are best led and delivered by a multi-disciplinary team, so every division and directorate is headed by a clinician, lead nurse, allied health professional, and manager.

Every voice is valued, and both clinical and management colleagues work collaboratively as peers, delivering clinically-led services with shared goals and mutual respect.

Our values are integral to the culture of our organisation, and shape our actions, behaviours and attitudes towards each other, patients, and their families.



Caring and compassionate: We treat everyone with dignity and respect, doing everything we can to show we care.



Recognising individuality: We respect, value and respond to every person's individual needs.



Seeking to involve: We will always involve patients and families in making decisions about care and treatment, and are always open and honest.



Team working: We work together as one team, and involve patients, families, and other services, to provide the best care possible.



Taking personal responsibility: We each take personal responsibility to give the highest standards of care and deliver a service we can always be proud of.



Location

The histopathology service is provided at Royal Preston Hospital, in the heart of central Lancashire.

Preston is the best city in the North West in which to live and work, according to a national study of the UK's largest cities that measures economic success, personal and family wellbeing. Preston has become the retail, commercial and cultural capital of the county, with a vibrant city centre.

For those keen on outdoor pursuits Preston is home to Guild Wheel, a 21 mile 'Greenway' suitable for cyclists and walkers. The Brockholes nature reserve is a haven for wildlife and great day out for families.

Lancashire is a diverse county, from the sweeping coastline in the west and famous seaside attractions of Blackpool, to areas of outstanding natural beauty and picturesque countryside of the Ribble Valley, and historic Lancaster, home to a medieval castle, and thriving culture and arts scene.

A beacon for foodies, there are bustling local markets, gastropubs, artisan producers and Michelin starred restaurants.

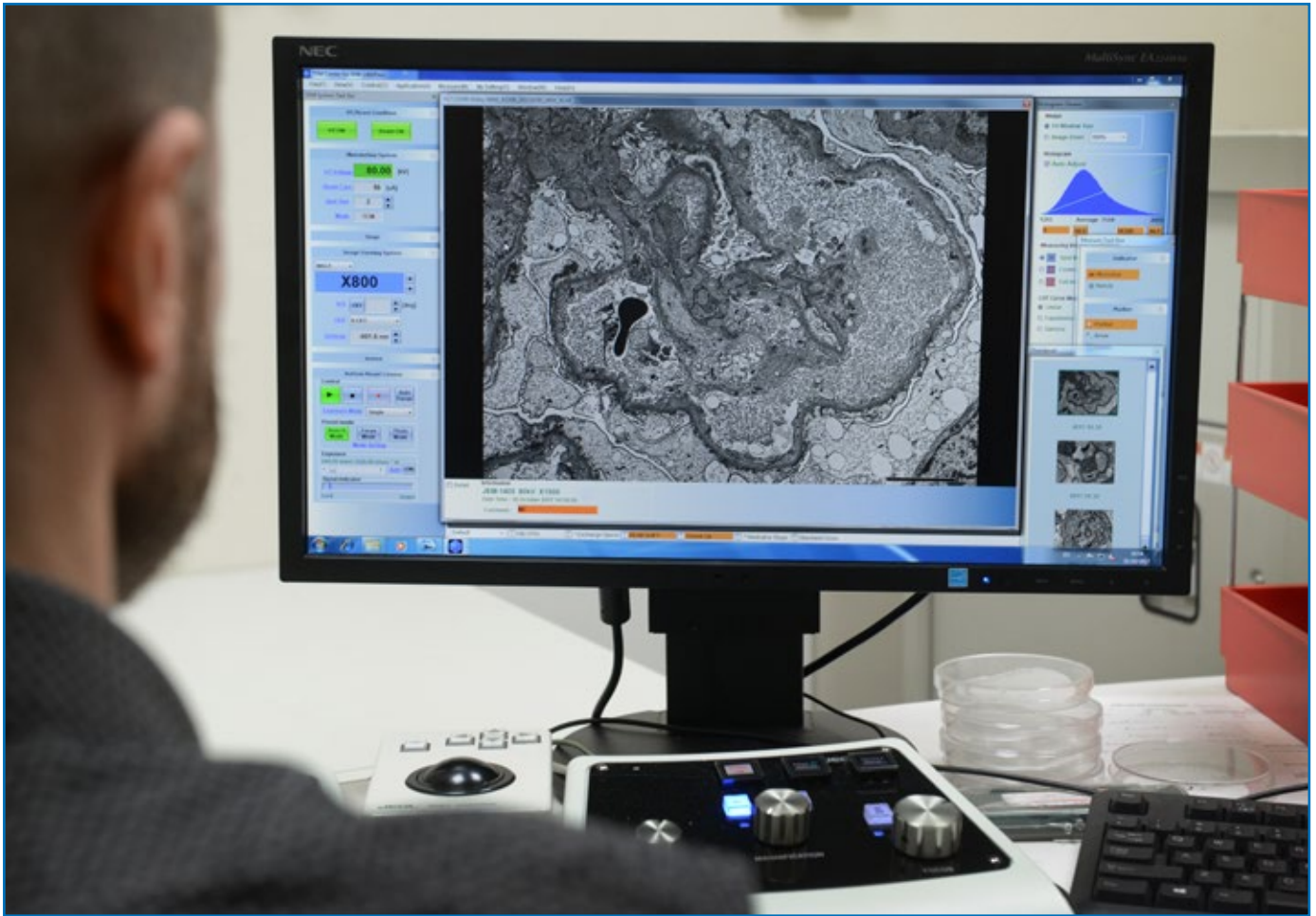
Lancashire is the perfect location from which to visit the attractions of the North West and beyond, with a great motorway network and rail links. The Yorkshire Dales, Lake District, Manchester and Liverpool are on the doorstep, and Scotland and London a train journey away.

Lancashire has many outstanding schools, and a wide range of housing options from new build parkland executive houses to barn conversions, farmhouses, and many period properties.

It's a wonderful place to live, and histopathology at Lancashire Teaching Hospitals is a great place to work.

Preston is the best place to live and work in the North West





The histopathology service

We deliver a large and complex histopathology service with a wide repertoire of procedures provided for a broad range of clients. We provide diagnostic histopathology, immunocytochemistry, electron microscopy, neuropathology and non-gynaecology cytology services. Additionally, we provide specialist tertiary cellular pathology services for renal, plastics and neurosciences, gynaecology, head and neck, as well as network coverage of herceptin testing for neighbouring NHS trusts.

Our histopathology lab is fully accredited by UKAS/ISO15189 and also participates in the N.E.Q.A.S. schemes for cellular pathology, neuropathology, muscles, cytopathology, renal pathology and immunocytochemistry.

Our equipment includes Leica Peloris x 3, Leica Autostainer/Coverslipper x 2, Ventana Special Stainer, Ventana Benchmark, Leica Bonds x 3, Joel Electron Microscope. We have also recently acquired a new electron microscope.





The histopathology team

The histopathology team comprises nine histopathology consultants and two neuropathologists.

Up to two general histopathology trainees are attached to the department, and we are often joined by one neuropathology trainee.

The biomedical science team includes a head biomedical scientist and deputy lead, and six biomedical scientist team leaders in dissection, histology, non-gynaecological cytology, neuropathology, immunocytochemistry and electron microscopy

We have accreditation for training of BMS staff and medically qualified histopathologists and neuropathologists.

The consultant medical staff participate in the local EQA schemes for both histology and cytology as well as EQAs relevant to their sub specialisation.

Pathologists are core members of local multidisciplinary teams (MDTs) for breast, skin, colorectal, upper GI, gynaecology, lung, urology and nephrology. Specialist cancer network MDTs operate with teams from Blackpool, University Hospitals of Morecambe Bay and East Lancashire via video conferencing. The network clinical teams are upper GI, gynaecology, head and neck, plastic surgery and urology and they are based at Royal Preston Hospital.

Secretarial support is also provided by a pathology administration pool.

We have accreditation for training of BMS staff and medically qualified histopathologists and neuropathologists.



Our new Research Centre

Research

We host the National Institute of Health Research (NIHR) Experimental Medicine Clinical Research Facility, which is a dynamic partnership with our local community trust and Lancaster University.

The **facility** has a remit to grow early translational and experimental medicines trials across Lancashire and South Cumbria, and has high quality clinical space, experienced staff, laboratory facilities and overnight accommodation. We also host Brain Tumour North West – a collaborative that supports the collection of brain tumour tissue to inform research into improved treatments and diagnostics in brain cancers, and are developing a bio-resource with a Research HTA licence and growing informatics infrastructure.

As a local delivery partner for the 100K Genomes project, we are at the forefront of the national transformation of genomics services in the NHS. We consistently recruit the most participants to NIHR clinical trials in the region, and have a broad portfolio of multi-centre and locally led research studies. Working closely with academic partners, we have a developing cohort of clinical academic fellows working towards MDs and PhDs, and have established joint clinical academic appointments.

Our facility provides the best possible environment in which to host research studies and clinical trials, and our award-winning research team will provide you with a wide range of expert support to undertake research work.

Our pathology department is involved in human tissue banking and we provide tissue for clinical trials; and work with the University of Central Lancashire on a range of projects.

This is an exciting time for the development of molecular pathology services across Lancashire and South Cumbria. As well as involvement in the 100K Genomes project, we will be leading the adoption of new technologies and assessment of their clinical utility for the introduction of personalised medicine in cancer.

An exciting time for the development of molecular pathology services

Developing personalised medicine



Teaching in our Sim Lab

Award-winning development and teaching

As a major teaching hospital, we are committed to enhancing the skills and knowledge of our staff, as well investing in developing the healthcare workforce of the future.

Our Health Academy has three modern, purpose-built centres across both hospitals, providing nationally recognised leadership and development programmes, surgical and medical scenario simulation in our world-class simulation lab, training, and our highly accredited library service.

We have an outstanding reputation for teaching medical and nursing students, with 100% of students passing their exams in the past few years. More than 300 students from the University of Manchester are based here for their three year clinical training, so there are plenty of opportunities to be involved with teaching undergraduate and postgraduate classes, and all of our consultants are encouraged and supported to become clinical and/or educational supervisors.

Developing your skills and advancing your career

We provide a wide range of tailored support to enable you to develop and reach your full potential.

Hospitals are more effective, and patient outcomes are better when clinicians are leaders. When you join

us you will have the opportunity to undertake our award-winning Consultant Leadership Development Programme, accredited at Masters level by Liverpool John Moores University. Many of our alumni have been promoted, and are now leading improvement programmes, developing services, or actively participating in research and teaching.

Our innovative organisational development team designs and provides a wide range of support to improve personal effectiveness, and can offer you personalised one-to-one coaching.

People learn in different ways, and seek support at different times, so as well as offering traditional methods of development, we provide short, just-in-time learning such as podcasts, eBooks and Leadership@Lunchtime interactive sessions.

Library services are available 24-7, and are provided by our knowledgeable team who will support you to access any materials you need, source and summarise information, set up tailored information alerts, and help you with studies.

We offer all our staff the following...

- 

You will be encouraged and supported
- 

Leadership and development opportunities
- 

Award winning training programmes
- 

A great place to work, where staff are caring, compassionate, committed and supportive



- 

Outstanding research facilities, expertise and support to enable you to conduct trials and studies, and drive innovation
- 

Staff health and wellbeing programme, including lots of support to help you manage your worklife balance
- 

Great opportunities to progress your career

How to apply to join us

To apply to join us please go to:
<http://jobs.lancsteachinghospitals.nhs.uk/>

You can also apply via NHS jobs. Here is a list of our current vacancies: <http://ow.ly/sy9h30cwirh>

If you have any queries about the application process, please contact our Medical Workforce team on **(0044) 1257 245521**.

If you have any questions about the role or would like to arrange an informal phone call or visit to the department, please contact

Dr Deepa Pandit,
Consultant Histopathologist and Head of Department
01772 522140 | Deepa.pandit@lthtr.nhs.uk

Dr David Orr
Consultant Clinical Microbiologist and Clinical Director of Pathology
01772 522107 | David.orr@lthtr.nhs.uk

If you would like to arrange a phone call or an informal visit please call **(0044) 1772 522094**.

You can also keep up to date with the latest news about our organisation and services on our website:
www.lancsteachinghospitals.nhs.uk

For the latest career opportunities see:
<https://twitter.com/LancsHospJobs>
<https://www.facebook.com/LancsHospJobs/>
<https://www.linkedin.com/company-beta/800416/>

Good luck with your application, we look forward to welcoming you to our team!



Our People awards

Celebrating success demonstrates to staff that their contribution is valued, and is the bedrock of sharing good practice and improving standards. Our People awards provide formal recognition of achievements, and we are creating a culture where giving thanks, and acknowledging effort and progress is a natural aspect of daily work.

